

## ESN-1 AXLE LIFT SPECIFICATIONS

- APPLICATION: AIR SUSPENDED MULTIAXLE TRAILERS
- LIFTING DEVICE: PNEUMATIC CYLINDER
- CYLINDER MATERIAL: ALUMINIUM ALLOY
- ROD MATERIAL: HARD CHROMED STEEL
- PISTON MATERIAL: STEEL AND RUBBER
- WORKING AREA: 211 CM<sup>2</sup>
- CYLINDER FORCE (6 - 8 BAR) 1260 - 1690 KG.
- MAXIMUM STROKE: 315 MM
- CYLINDER WEIGHT: 18 KG
- SCREW FOR PIPE FITTING: 1/4 W.GAS (R1/4)
- TRACTION ELEMENT: STEEL WIRE 6×19+1 Ø12 MM
- WIRE WORKING LOAD: 1800 KG.
- WIRE LENGTH: BY ORDER, FROM 950 MM TO 1600 MM
- WIRE DEFLECTOR DEVICE: GUIDE PULLEY WITH ROLLER BEARING
- AXLE SUPPORT: OPT.: FOR 130 MM /150 MM SQUARE  
OR ROUND AXLE
- COMPONENTS OF THE LIFT AXLE SYSTEM KIT:
  - PNEUMATIC CYLINDER
  - TRACTION WIRE
  - GUIDE PULLEY WITH SUPPORT
  - AXLE SUPPORT
  - ANCHORING BOLTS
  - BOLT PINS KIT
  - SCREWS KIT
- COMPLET KIT WEIGHT: 24 KG.
- ASSEMBLY OF THE LIFT AXLE SYSTEM KIT:
  - THE PNEUMATIC CYLINDER MUST BE SCREWED OVER (OR UNDER) TWO GIRDERS SOLDERED AT THE VEHICLE FRAME.  
(OUR PROPOSAL: 80 MM "U" BARS)
  - THE GUIDE PULLEY SUPPORT MUST BE SOLDERED OVER (OR UNDER) ONE GIRDER SOLDERED AT THE VEHICLE FRAME.  
(OUR PROPOSAL: 80X60X6 MM SQUARE TUBE)
  - VERY IMPORTANT: WHEN THE VEHICLE IS AT THE RIDE HEIGHT, THE CYLINDER HAS TO BE A MARGIN TO REACH THE END OF HIS MINIMUM STROKE. THIS MUST BE SO TO AVOID DAMAGES WHEN THE VEHICLE IS OVER OF HIS RIDE HEIGHT.

Acceval ESN-1  
315 mm stroke

PNEUMATIC CYLINDER

SCREW AND NUT

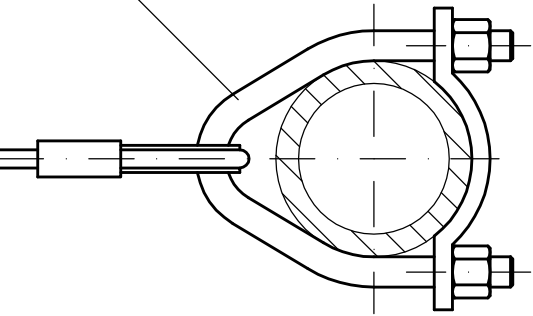
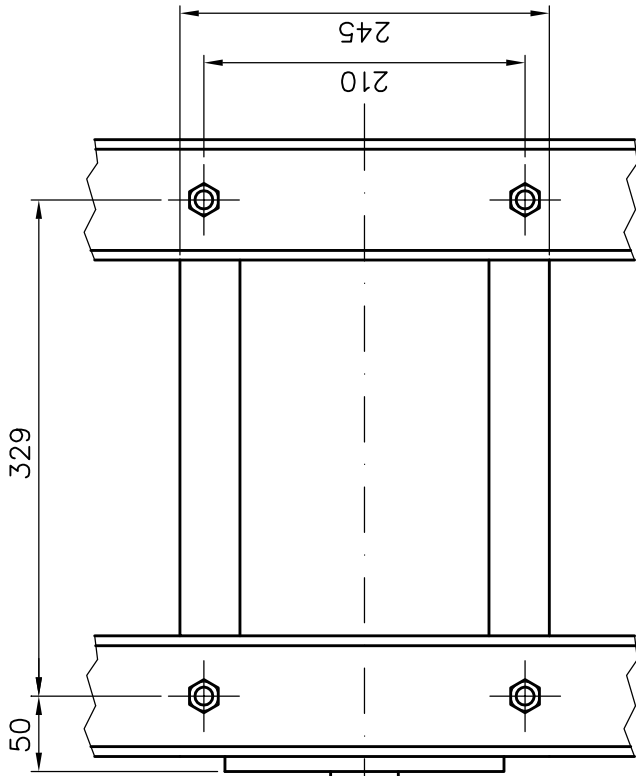
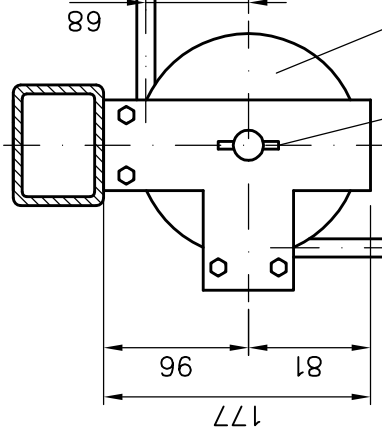
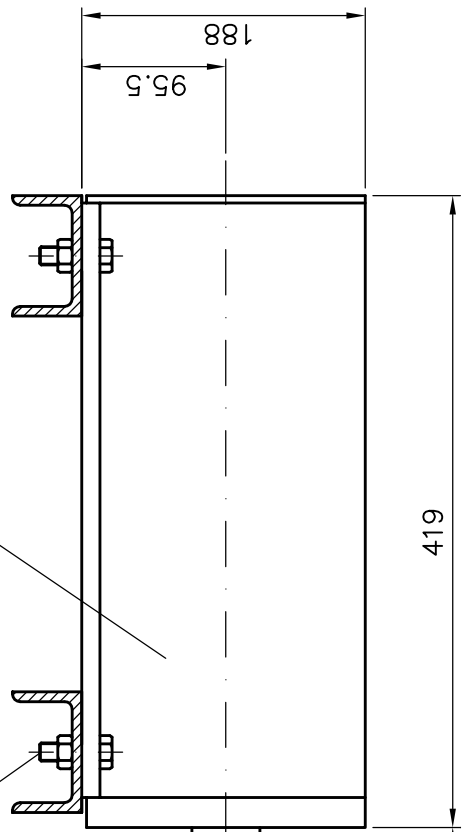
TRACTION WIRE

BOLT AND PINS

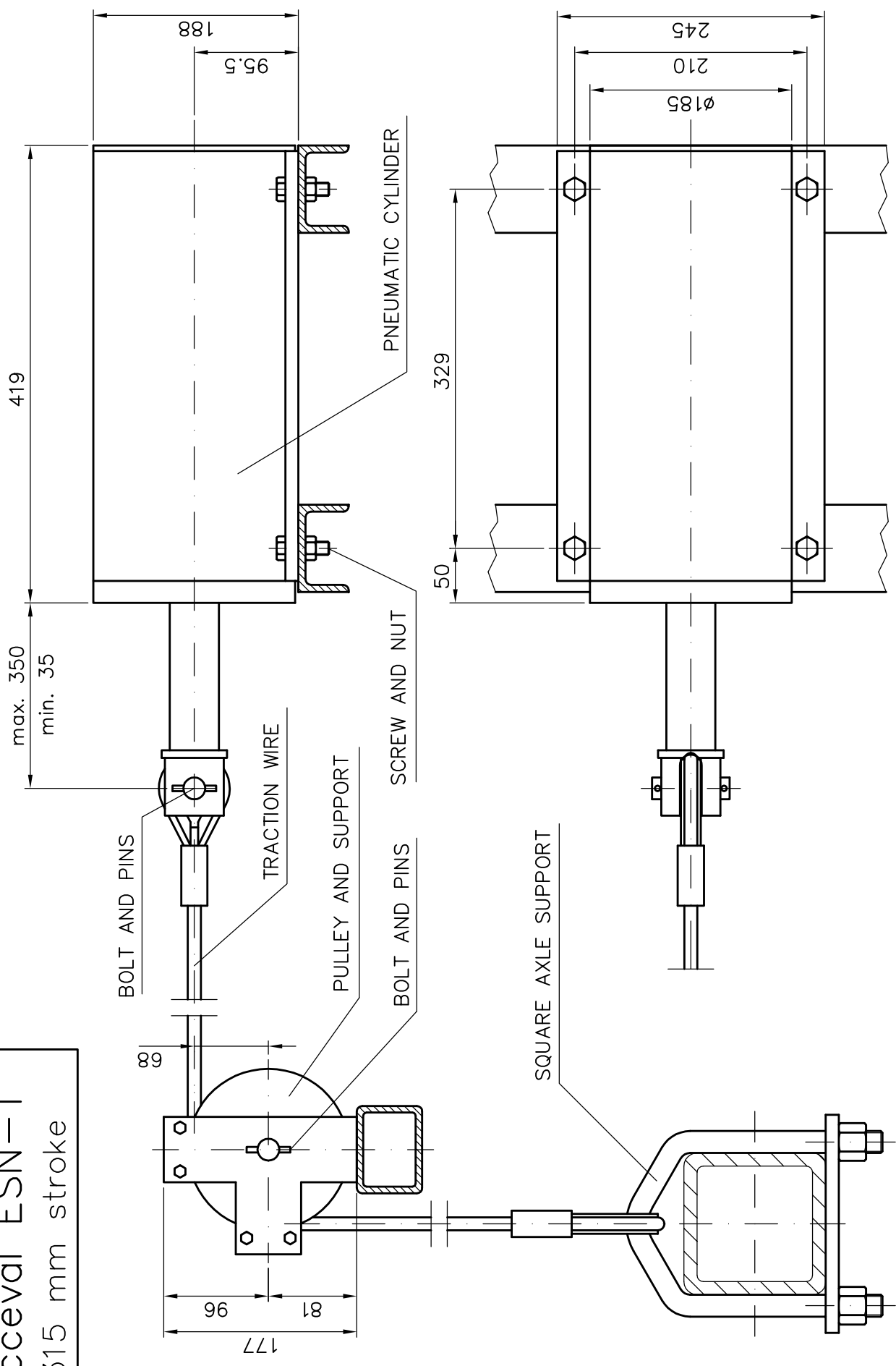
PULLEY AND SUPPORT

BOLT AND PINS

ROUND AXLE SUPPORT



Acceval ESN-1  
315 mm stroke



SPECIAL SMALL PULLEY FOR ULTRA-LOW VEHICLES

