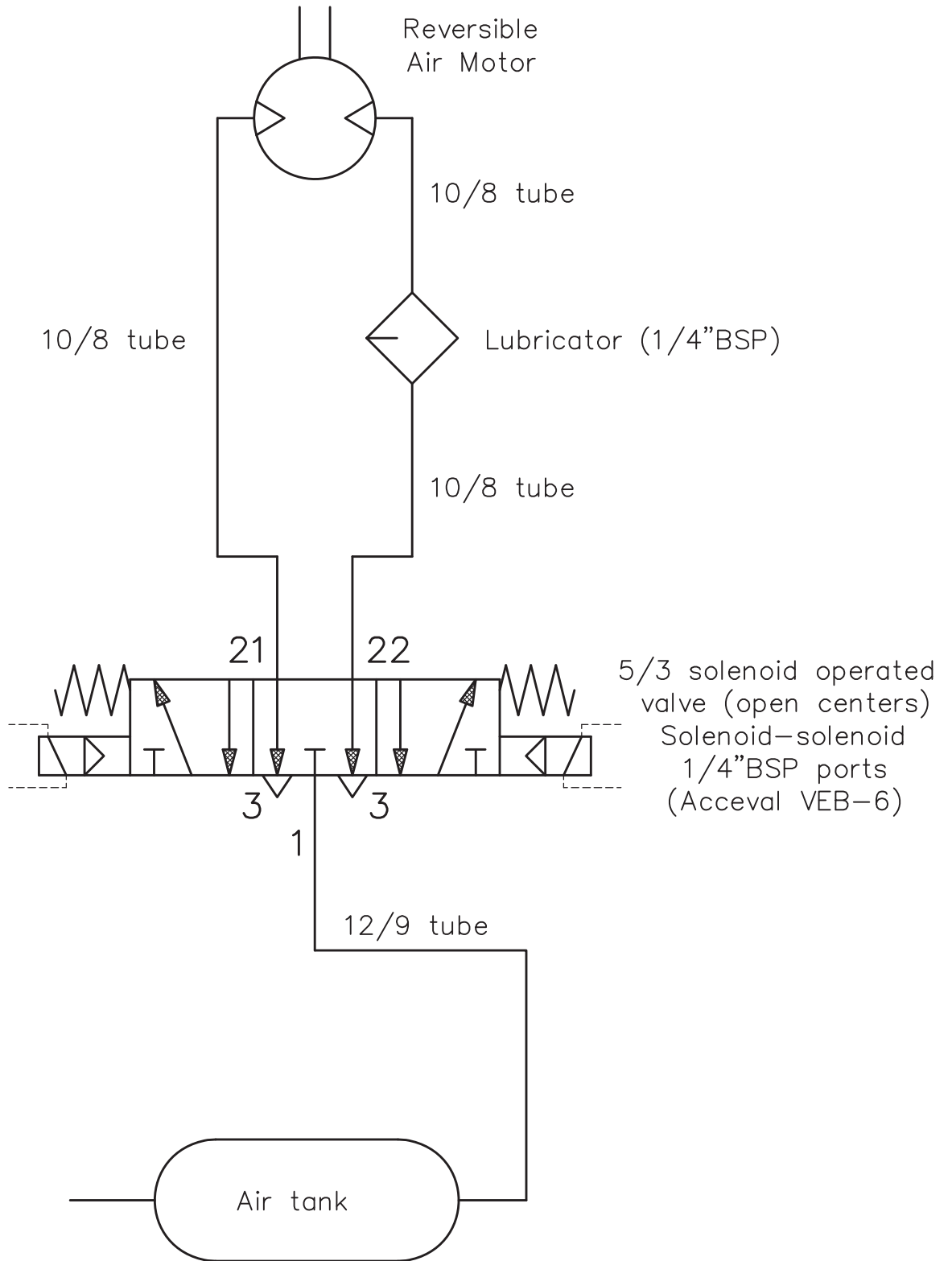


AIR MOTOR CONNECTIONS

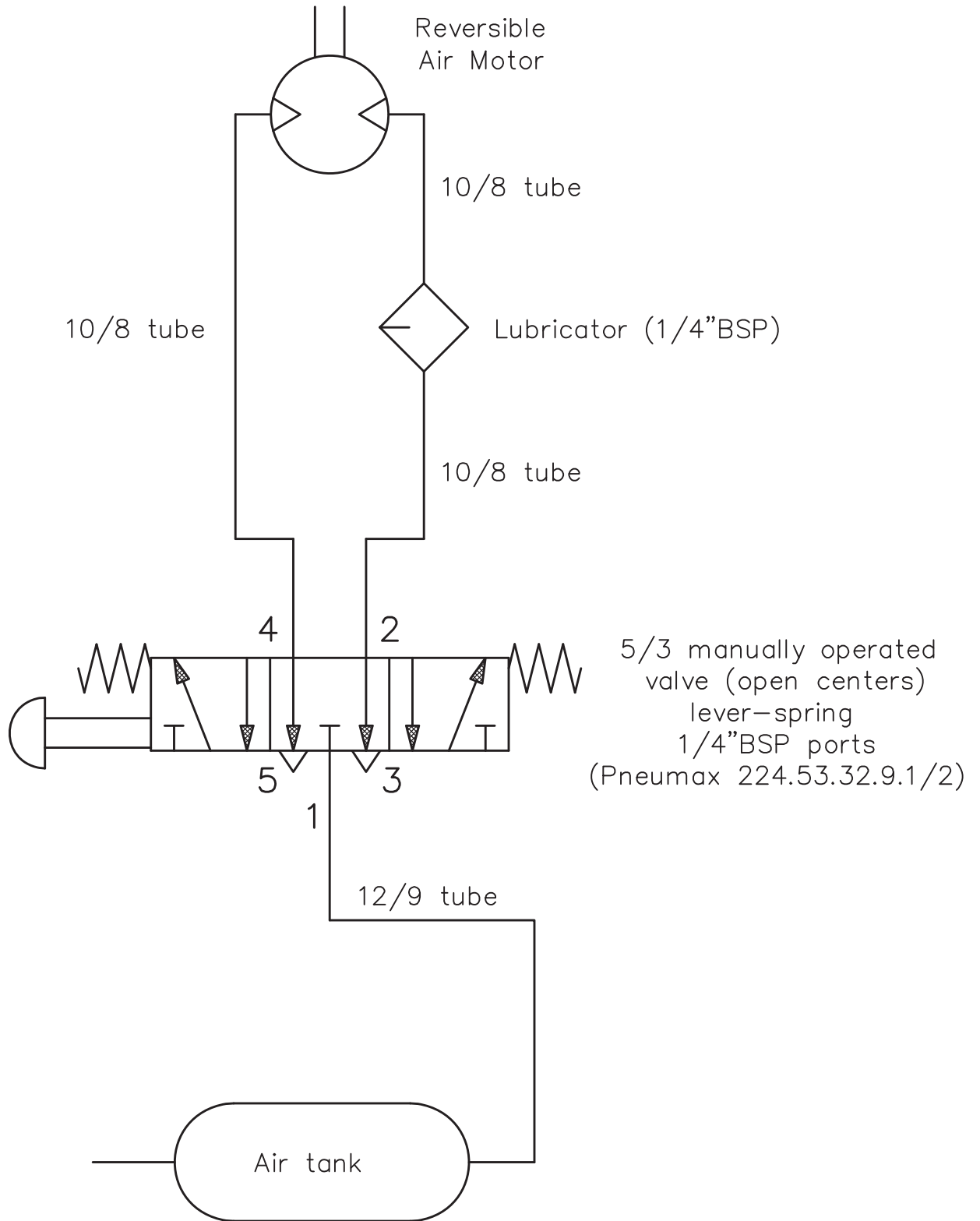
SCHEME N.1: ELECTRICAL COMMAND FROM THE CAB.



Note: Recommended switch like car glasses elevator.

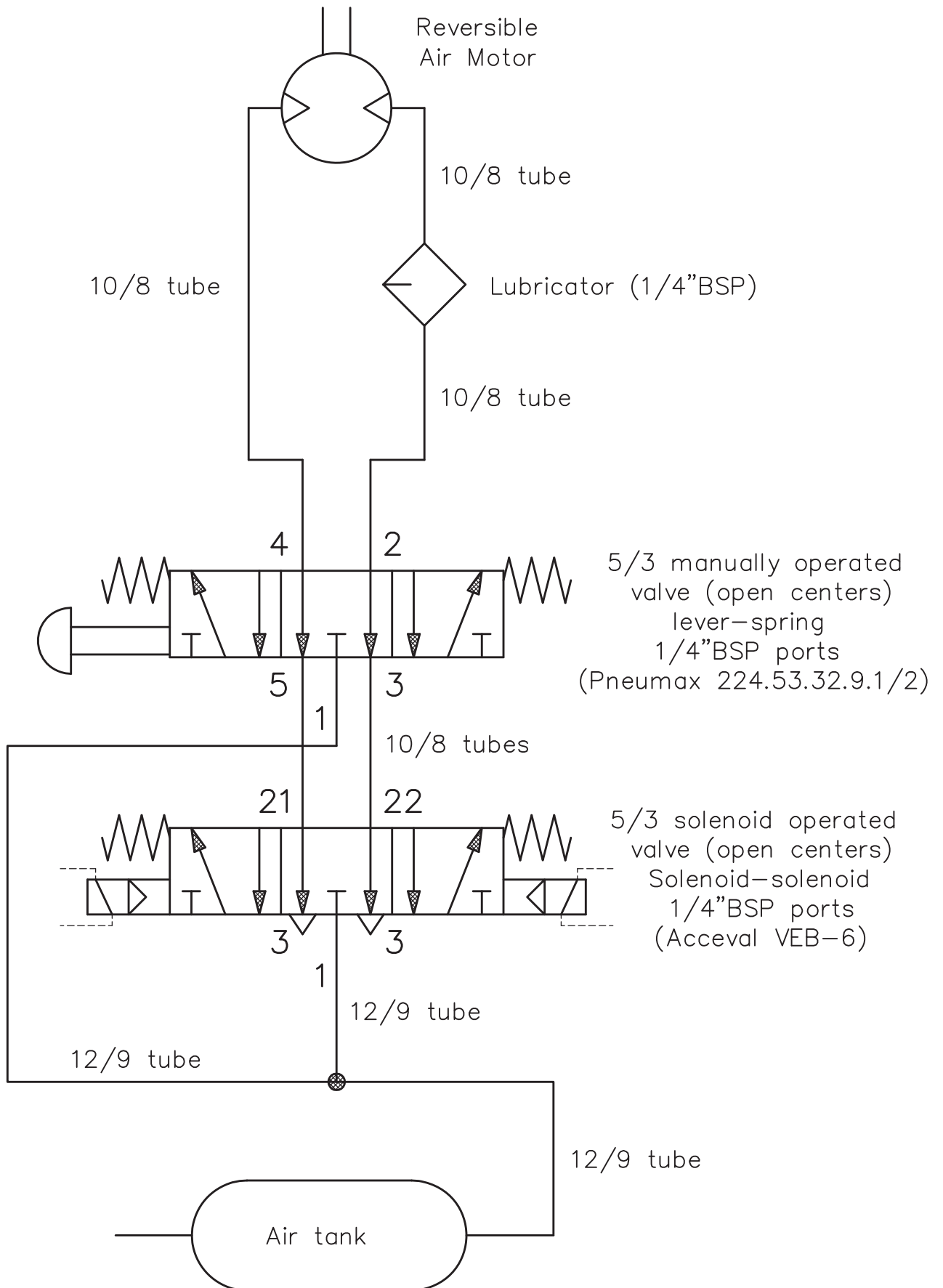
AIR MOTOR CONNECTIONS

SCHEME N.2: MANUAL COMMAND FROM THE PLATFORM.



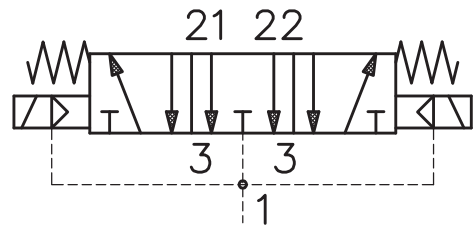
AIR MOTOR CONNECTIONS

SCHEME N.3: DOUBLE COMMAND (ELEC. CAB + MAN. PLATFORM)

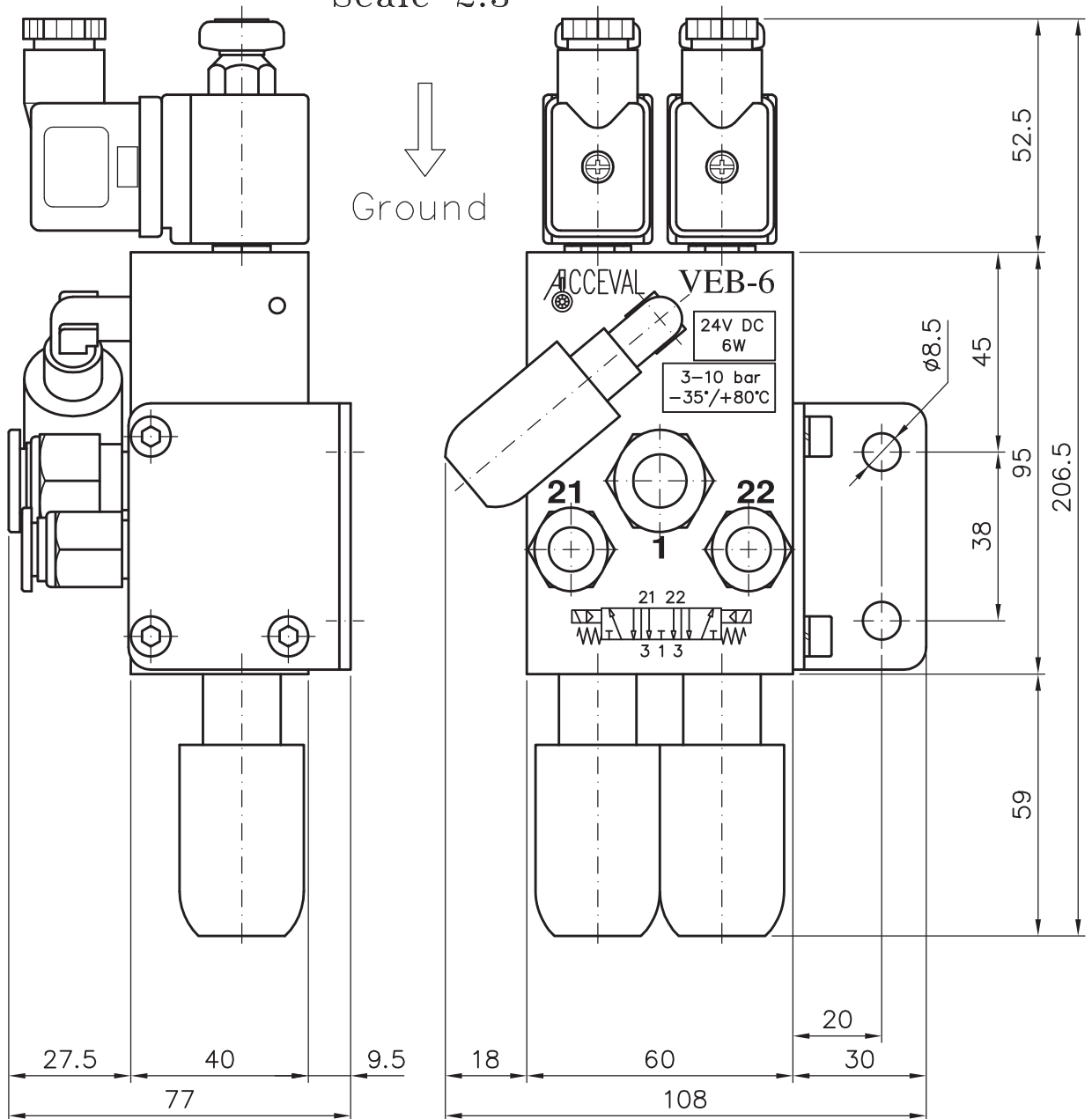


ACCEVAL VEB-6

5/3 SOLENOID OPERATED
VALVE (OPEN CENTERS)
SOLENOID-SOLENOID
1/4" BSP PORTS



Scale 2:3



WORKING SPECIFICATIONS

- * Max. working pressure: 10 bar.
- * Min. working pressure: 3 bar.
- * Safe static pressure: 15 bar.
- * Temp. range.: from -35°C to $+80^{\circ}\text{C}$.
- * Electrical details: 24V DC 6W.
- * Protection class: IP 65 (DIN40050).
- * Electrical duty: 100%.
- * Electrical connectors: DIN43650.
- * Electromagnetic compatibility (EMC) according to 89/336/CEE.
- * Low voltage equipment (LVD) according to 73/23/CEE.

PNEUMATICAL CONNECTIONS

Port n.1

- * Push-in fitting for 12 mm tube.
(Optional: for 10 or 8 mm tubes)

Ports n.21 y n.22

- * Push-in fittings for 10 mm tube.
(Optional: for 8 mm tube)

Ports n.3 (Exhaust) and breathing

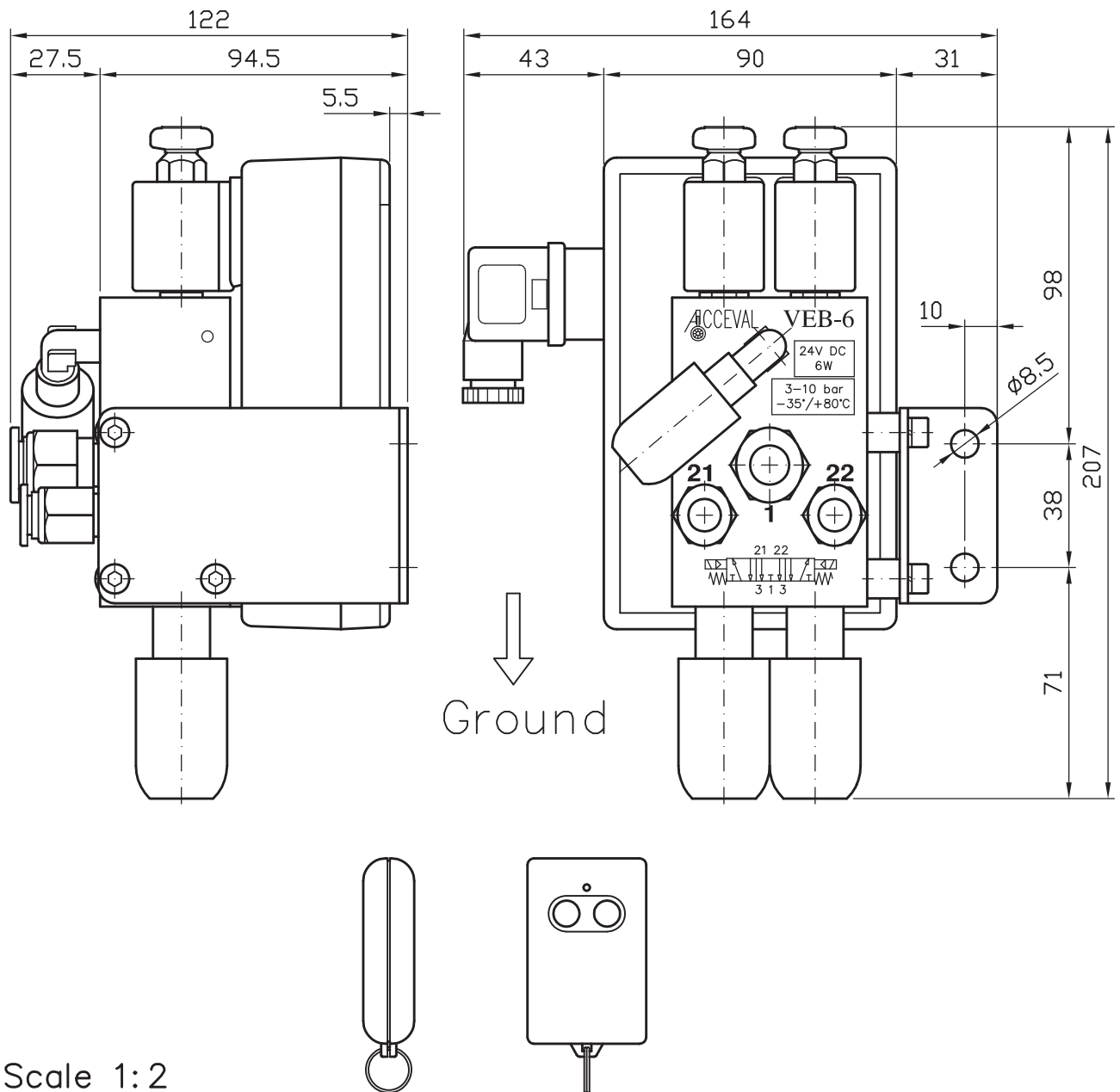
- * Filter + filter cover.

Exhaust port of solenoid valve

- * Rubber cup protection.

ACCEVAL VEB-6RF

5/3 SOLENOID VALVE OPERATED BY R.F. REMOTE CONTROL



Scale 1:2

SPECIFICATIONS

- * 5/3 Solenoid-Solenoid Operated Valve, Open Centers, 1/4" BSP Ports.
- * Solenoid Valve Specifications and Pneumatic Connections: Same than VEB-6.
- * R.F. Receiver: Incorporate in solenoid valve by a sealed box (IP-65).
- * R.F. Receiver Specifications:
 - Type: Superheterodyne AM/ASK demodulation.
 - Channels: 2 Monostable Channels (Keep pushed the button switch).
 - Feed Voltage: 24 VDC (DIN43650 Industrial Connector, B type).
 - Homologated Working Frequency: 433.92 Mhz.
 - Maximum Working Distance: Approx. 30 meters.
- * R.F. Transmitter Specifications:
 - Type: 2 Channels.
 - Electrical Feed: 12V Battery, 23A type.
- * Note: Communication between transmitter and receiver has been previously programmed in the factory. If the transmitter breaks or losses, it will be necessary to follow easy instructions to program the new one.