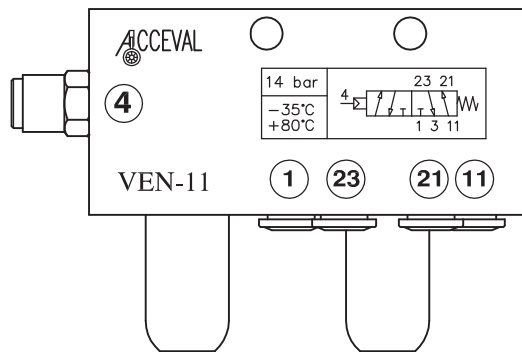


# *Acceval* VEN-11



Lift Axle Control Valve  
Pneumatically Commanded  
From EBS System

For Suspensions with  
Single Circuit

# ACCEVAL VEN-11

## LIFT AXLE CONTROL VALVE FOR EBS SYSTEM WITH AIR OPERATION

(SUSPENSION: SINGLE CIRCUIT)

Scale 3:5

### WORKING SPECIFICATIONS

- \* Pneumatic Scheme: See Drawing.
- \* Max. Working Pressure: 10 bar.
- \* Safe Static Pressure: 15 bar.
- \* Temp. Range: from -35°C to +80°C.

### PNEUMATICAL CONNECTIONS

Ports n.1, n.23, n.21 and n.11

- \* Insertable push-in fittings for 8mm, 10mm, 5/16", or 3/8" tubes.

Port n.3 (Exhaust) and Breathing

- \* Filter + filter cover.

Exhaust port of solenoid valve

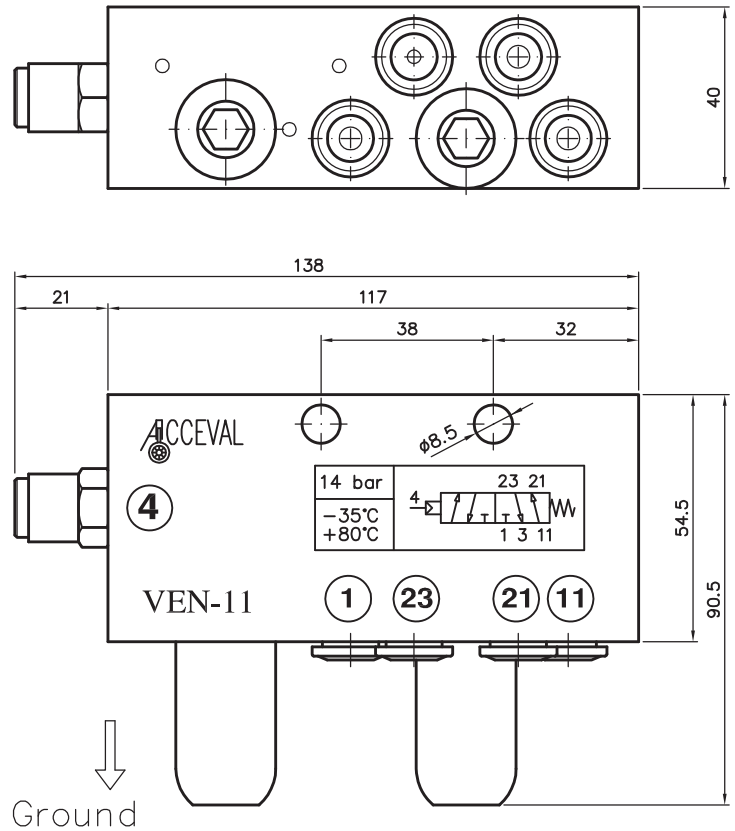
- \* Rubber cup protection.

### Installation

- \* Port n.1: Air Pressure Inlet.
- \* Port n.11: Suspension Line.
- \* Port n.21: Lift Axle AirSprings.
- \* Port n.23: Axle Lift.
- \* Port n.4: Air Command from EBS. (8mm - 5/16" tube)

### VERSIONS

| Valve Code | Push-in Fittings for: |           |            |           |
|------------|-----------------------|-----------|------------|-----------|
|            | 8mm tube              | 10mm tube | 5/16" tube | 3/8" tube |
| VEN11-0808 | X                     |           |            |           |
| VEN11-1008 |                       | X         |            |           |
| VEN11-0808 |                       |           | X          |           |
| VEN11-3808 |                       |           |            | X         |



# ACCEVAL VEN-11

## PNEUMATICAL SCHEME

(Suspension: Single Circuit)

