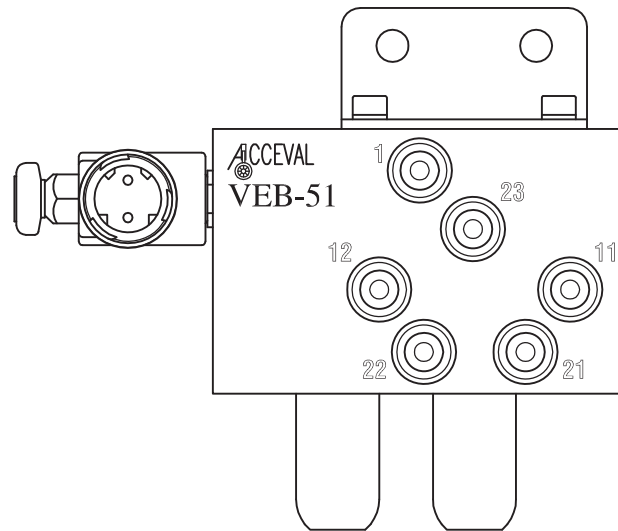


# *Acceval* VEB-51



Lift Axle Control Valve  
Electrically Commanded  
From EBS System

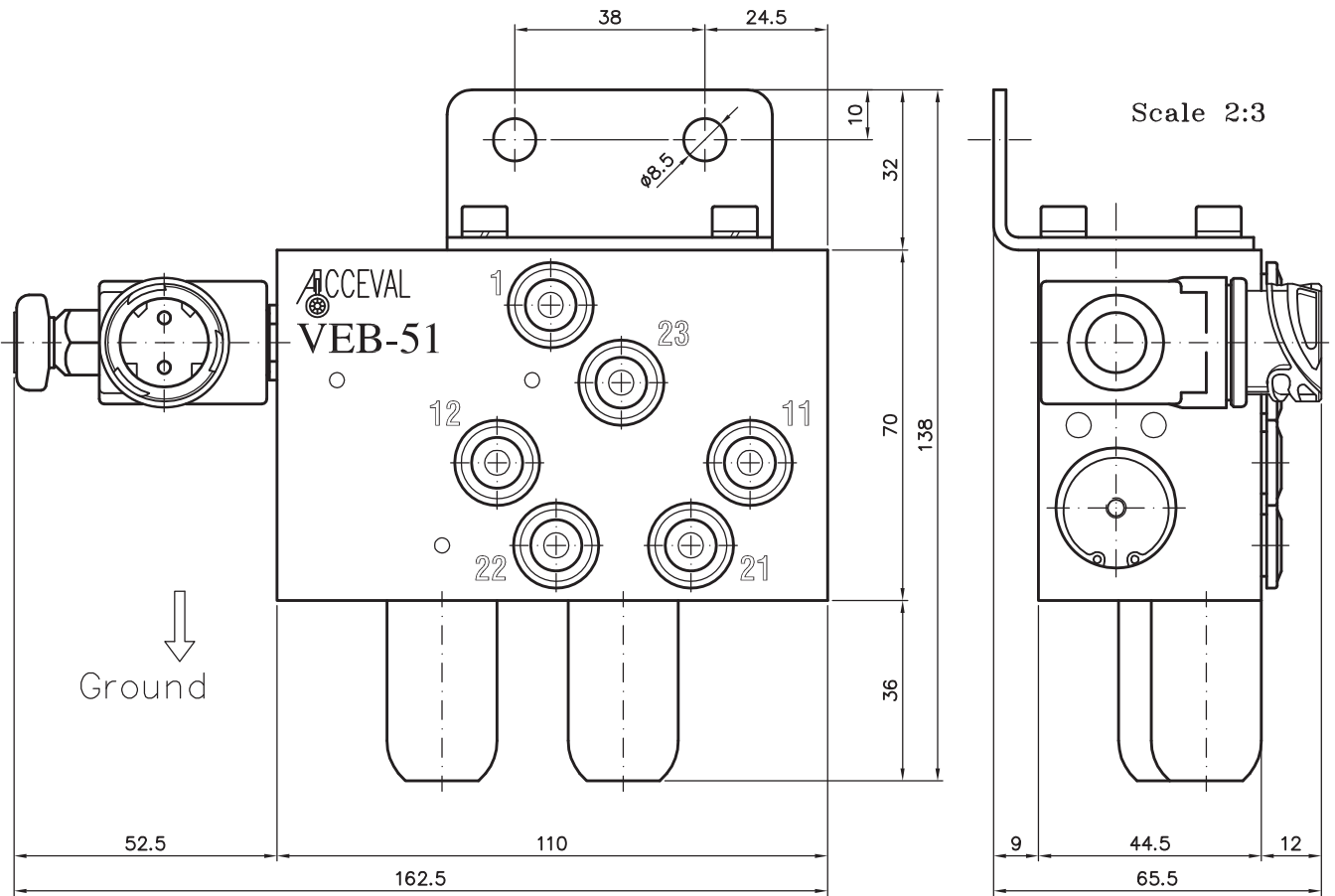
For Suspensions with  
Double Circuit

# ACCEVAL VEB-51

LIFT AXLE CONTROL VALVE  
FOR EBS SYSTEM

(SUSPENSION: DOUBLE CIRCUIT)

EXTERNAL DIMENSIONS



## WORKING SPECIFICATIONS

- \* Pneumatic Scheme: See Drawing.
- \* Max. Working Pressure: 10 bar.
- \* Safe Static Pressure: 15 bar.
- \* Temp. Range: from  $-35^{\circ}\text{C}$  to  $+80^{\circ}\text{C}$ .
- \* Solenoid: 24VDC 6W or 12VDC 9W.
- \* Electrical Duty: 100%.
- \* Solenoid with Industrial Connector DIN43650 (IP65) or Bayonet Connector DIN72585-A1-2.1 (IP68)
- \* Electromagnetic compatibility (EMC) according to 89/336/EEC.
- \* Low voltage equipment (LVD) according to 73/23/EEC.

## PNEUMATICAL CONNECTIONS

Ports n.1, 11, 12, 21, 22 and 23

- \* Insertable push-in fittings for 8mm, 10mm, 5/16", or 3/8" tubes.

Port n.3 (Exhaust) and Breathing

- \* Filter + filter cover.

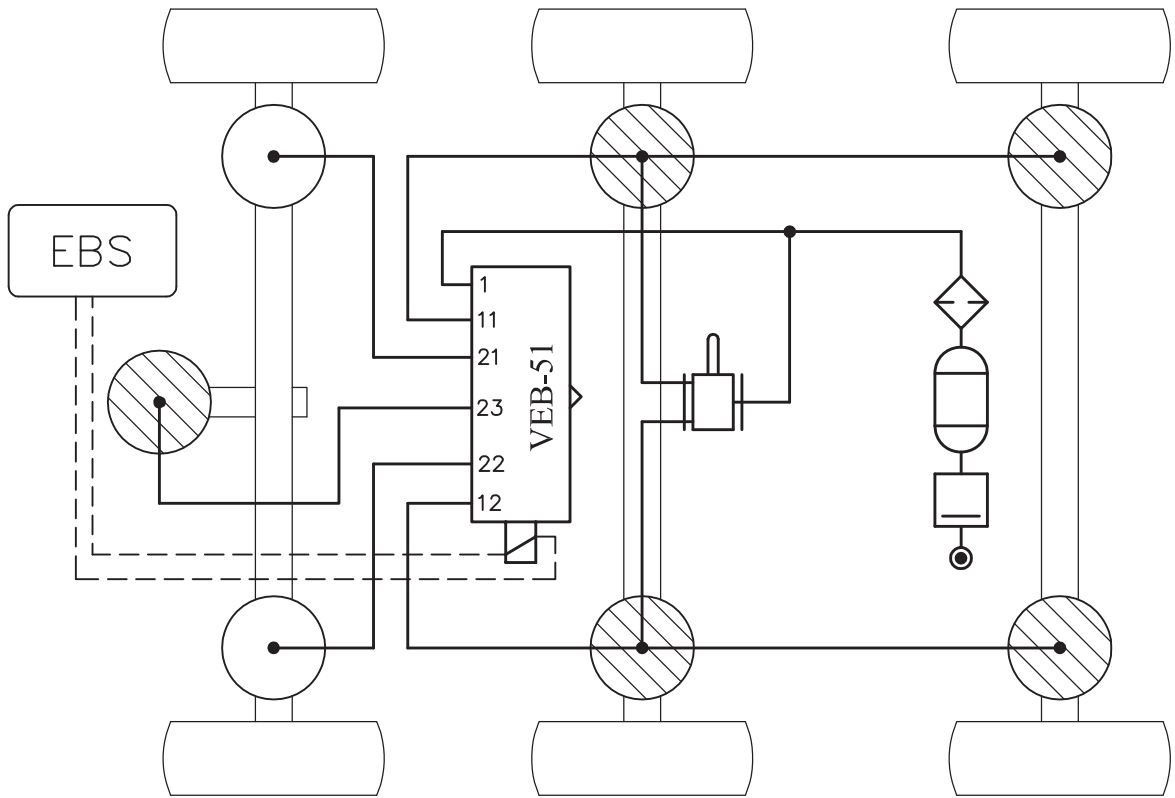
Exhaust port of solenoid valve

- \* Rubber cup protection.

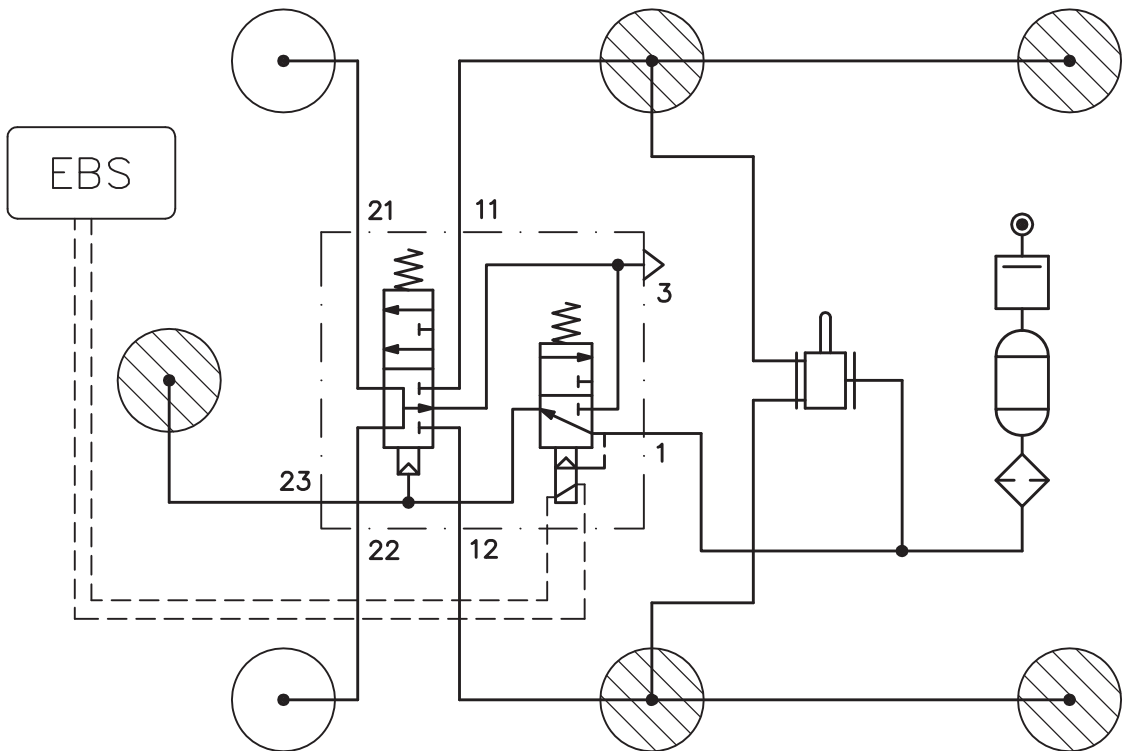
Installation

- \* Port n.1: Air Pressure Inlet.
- \* Ports n.11, n.12: Suspension Lines.
- \* Ports n.21, n.22: Lift Axle AirSprings.
- \* Port n.23: Axle Lift.

**ACCEVAL VEB-51**  
**BASIC CONNECTIONS SCHEME**  
 (Suspension: Double Circuit)



**ACCEVAL VEB-51**  
**PNEUMATICAL SCHEME**  
 (Suspension: Double Circuit)



# ACCEVAL VEB-51

## VERSIONS AND ANCHORING ORIENTATION

### VERSIONS

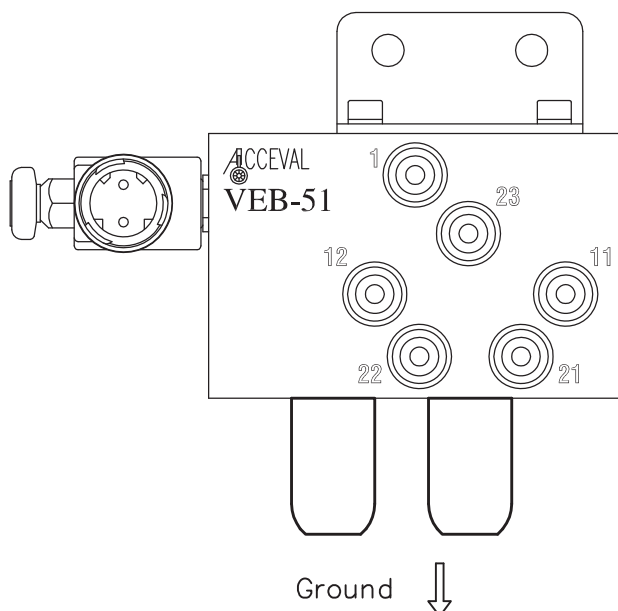
Valve Code	Push-in Fittings for:				Solenoid Voltage		Solenoid Connector	
	8mm tube	10mm tube	5/16" tube	3/8" tube	24 VDC	12 VDC	Industrial type	Bayonet type
VEB51-0824I	✗				✗		✗	
VEB51-1024I		✗			✗		✗	
VEB51-0824B	✗				✗			✗
VEB51-1024B		✗			✗			✗
VEB51-0812I			✗			✗	✗	
VEB51-3812I				✗		✗	✗	

### ANCHORING ORIENTATION

- \* The best orientation: Filters looking down.
- \* Acceptable orientation: Filters in horizontal position.
- \* Non-acceptable orientation: Filters looking up.

#### THE BEST ORIENTATION

(Filters looking down)



#### ACCEPTABLE ORIENTATION

