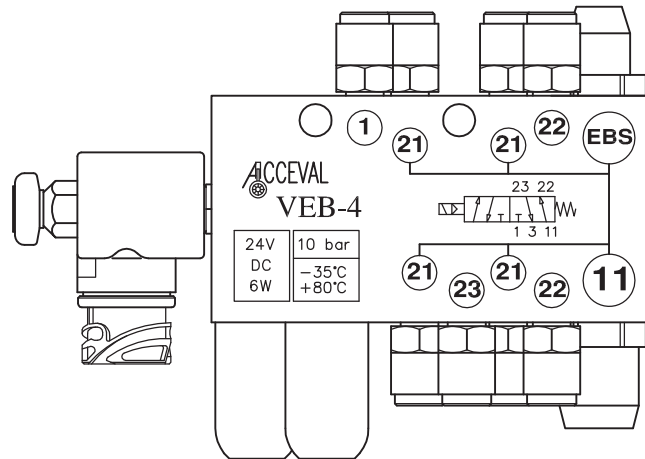


Acceval VEB-4



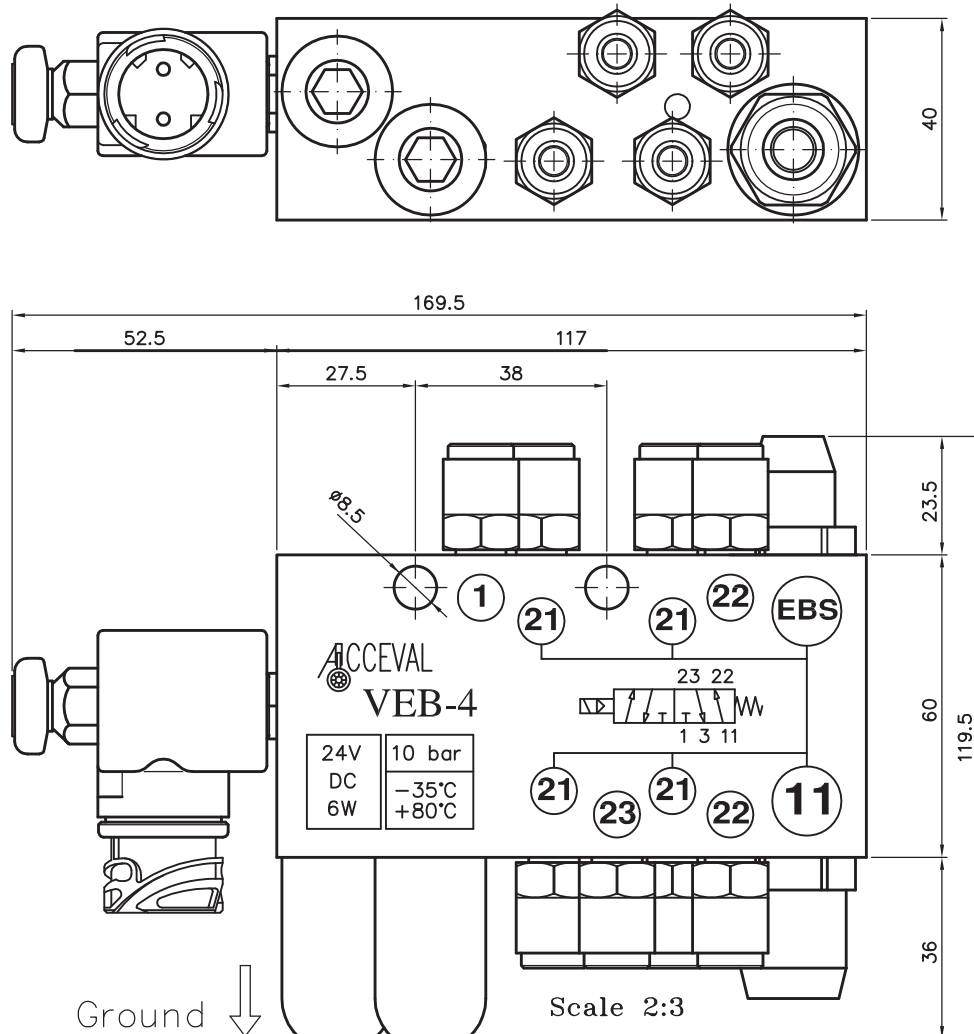
Lift Axle Control Valve
Electrically Commanded
From EBS System

For Suspensions with
Single Circuit

Air Suspension
Distribution Block

ACCEVAL VEB-4

AIR DISTRIBUTION BLOCK
WITH LIFT AXLE CONTROL
VALVE FOR EBS SYSTEM
(SUSPENSION: SINGLE CIRCUIT)



WORKING SPECIFICATIONS

- * Pneumatical scheme: see drawing.
- * Max. working pressure: 10 bar.
- * Safe static pressure: 15 bar.
- * Temp. range: from -35°C to $+80^{\circ}\text{C}$.
- * Electrical details: 24V DC 6W.
- * Electrical Duty: 100%.
- * Solenoid with bayonet connector DIN72585-A1-2.1 (IP-68).
- * Electromagnetic compatibility (EMC) according to 89/336/EEC.
- * Low voltage equipment (LVD) according to 73/23/EEC.
- * Optional: Solenoid with industrial connector DIN43650 (IP-65).

PNEUMATICAL CONNECTIONS

Ports n.1, n.21, n.22 and n.23

- * Automotive push-in fittings T-8mm.

Port n.11

- * Automotive push-in fittings T-12mm.

Port n.3 (Exhaust) and breathing

- * Filter + filter cover.

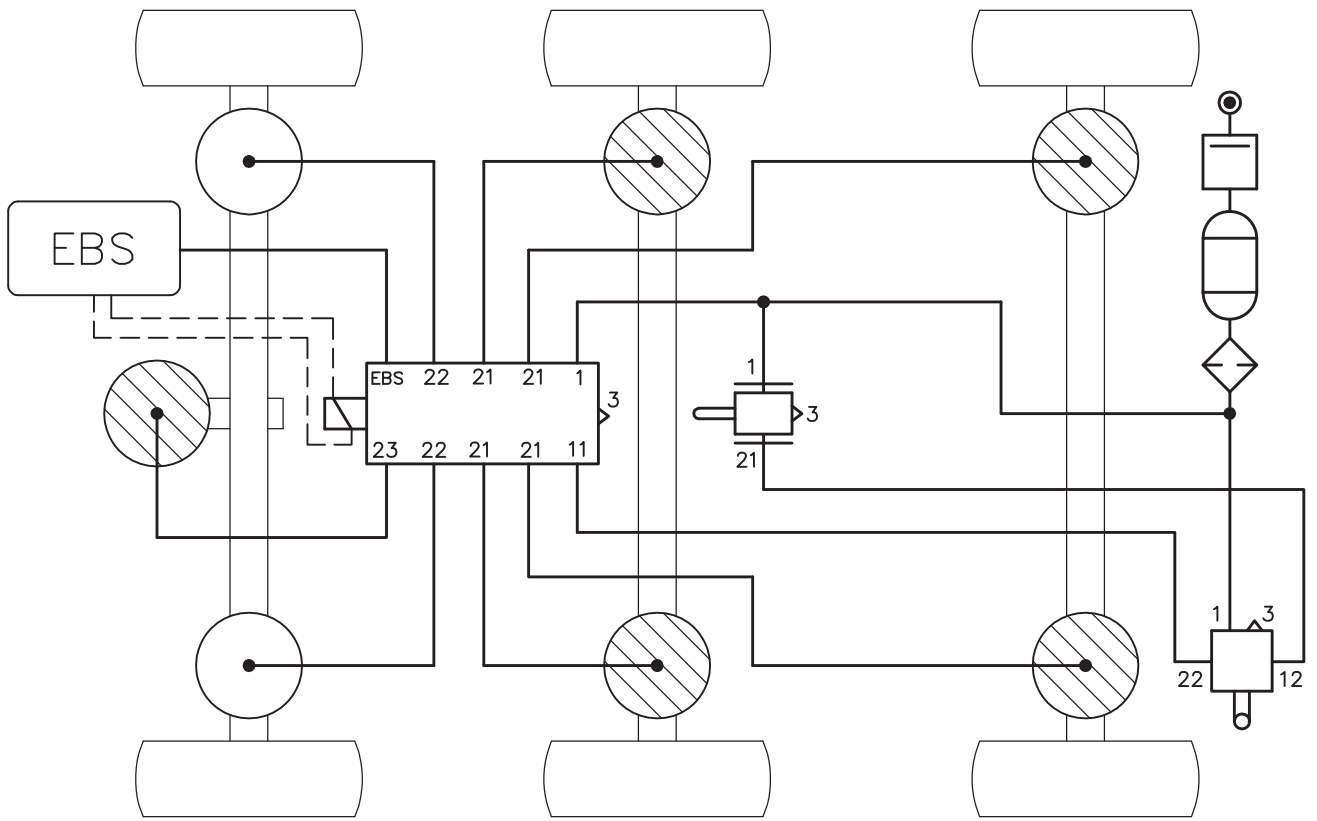
Exhaust port of solenoid valve

- * Rubber cup protection.

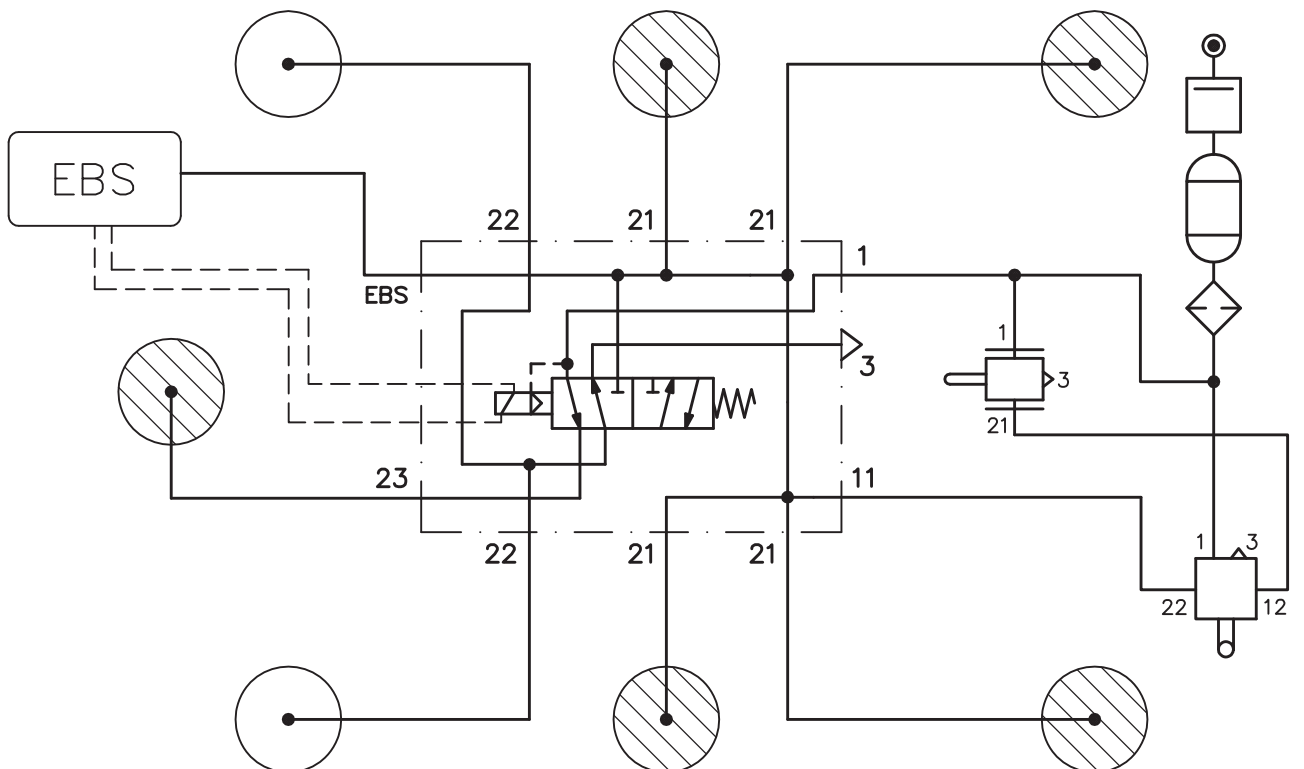
Installation

- * Port n.1: Air pressure inlet.
- * Port n.11: From raise/lower valve.
- * Port n.21: To non-lift axle bellows.
- * Port n.22: To lift axle bellows.
- * Port n.23: To lifter.
- * Port "EBS": To EBS pressure sensor.

ACCEVAL VEB-4
 BASIC CONNECTIONS SCHEME
 (Suspension: Single Circuit)



ACCEVAL VEB-4
 PNEUMATICAL SCHEME
 (Suspension: Single Circuit)



ACCEVAL VEB-4

OPTIONS AND ANCHORING ORIENTATION

OPTIONS

1) Electrical connector:

* Standard:

Solenoid with bayonet connector DIN72585-A1-2.1 (IP-68).

* Optional:

Solenoid with industrial connector DIN43650 (IP-65).

2) Connection for EBS pressure sensor:

* Standard: With M16x1,5-T8mm fitting in port "EBS".

* Optional: Without fitting in port "EBS".

3) Passage diameter of port N.23:

* Standard: $\varnothing 1.6$ mm.

* Optional: $\varnothing 3.0$ mm.

ANCHORING ORIENTATION

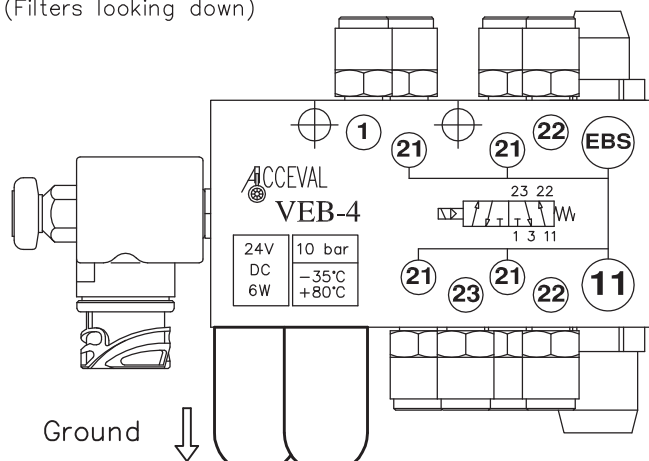
* The best orientation: Filters looking down.

* Acceptable orientation: Filters in horizontal position.

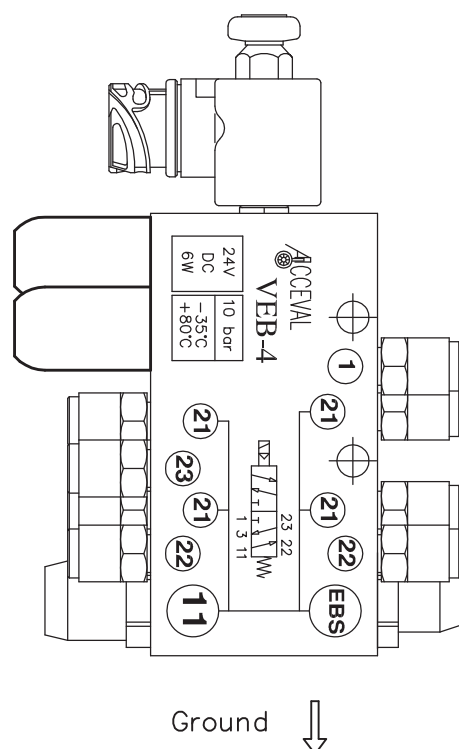
* Non-acceptable orientation: Filters looking up.

THE BEST ORIENTATION

(Filters looking down)



ACCEPTABLE ORIENTATION



ACCEPTABLE ORIENTATION

