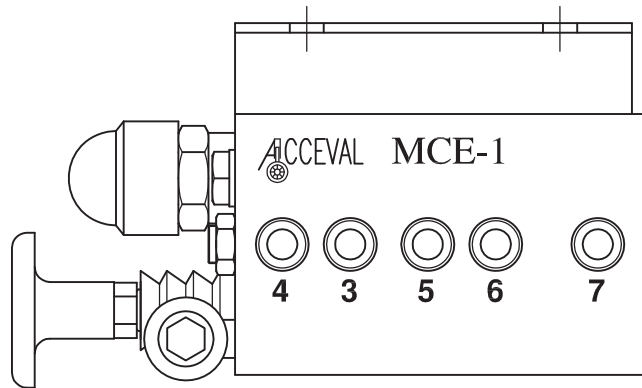


# *Acceval* MCE-1



Lift Axle Control Valve  
With Automatic Drop Function

Independent of EBS System

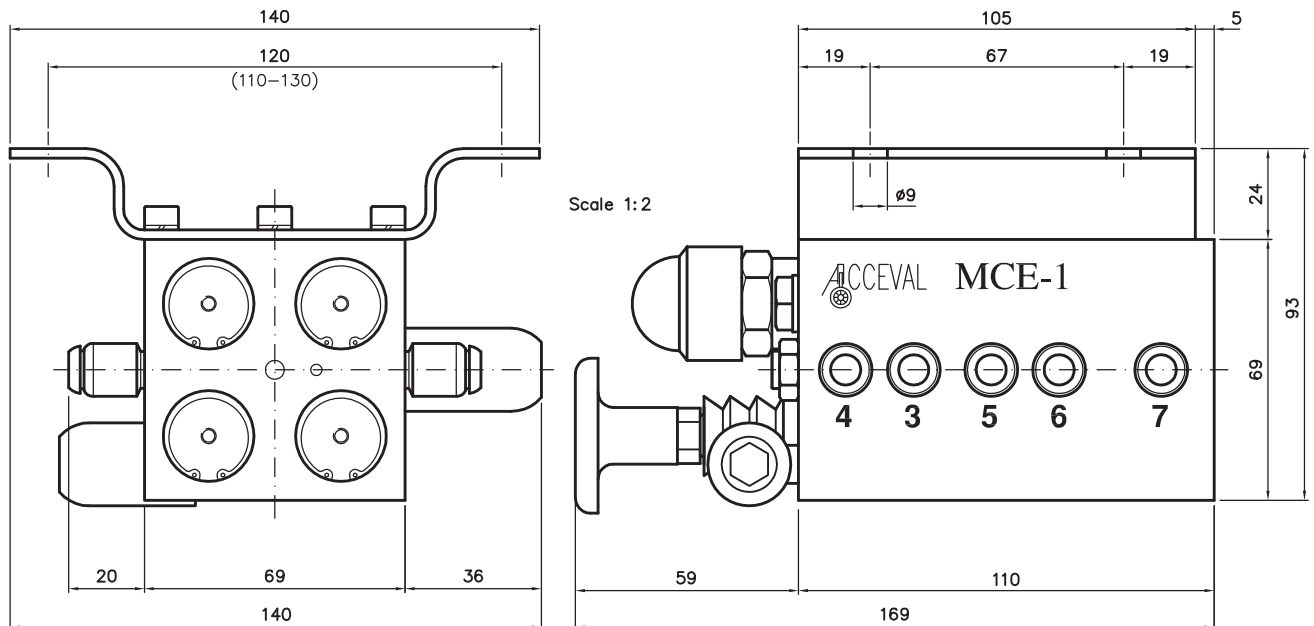
For Suspensions with  
Double Circuit

Automatic Drop  
and Manual Lifting

# ACCEVAL MCE-1

SEMI-AUTOMATIC LIFT AXLE CONTROL VALVE  
(Automatic Drop and Manual Lifting)

TÜV   
Nr. 390-0582-96 FBK/B



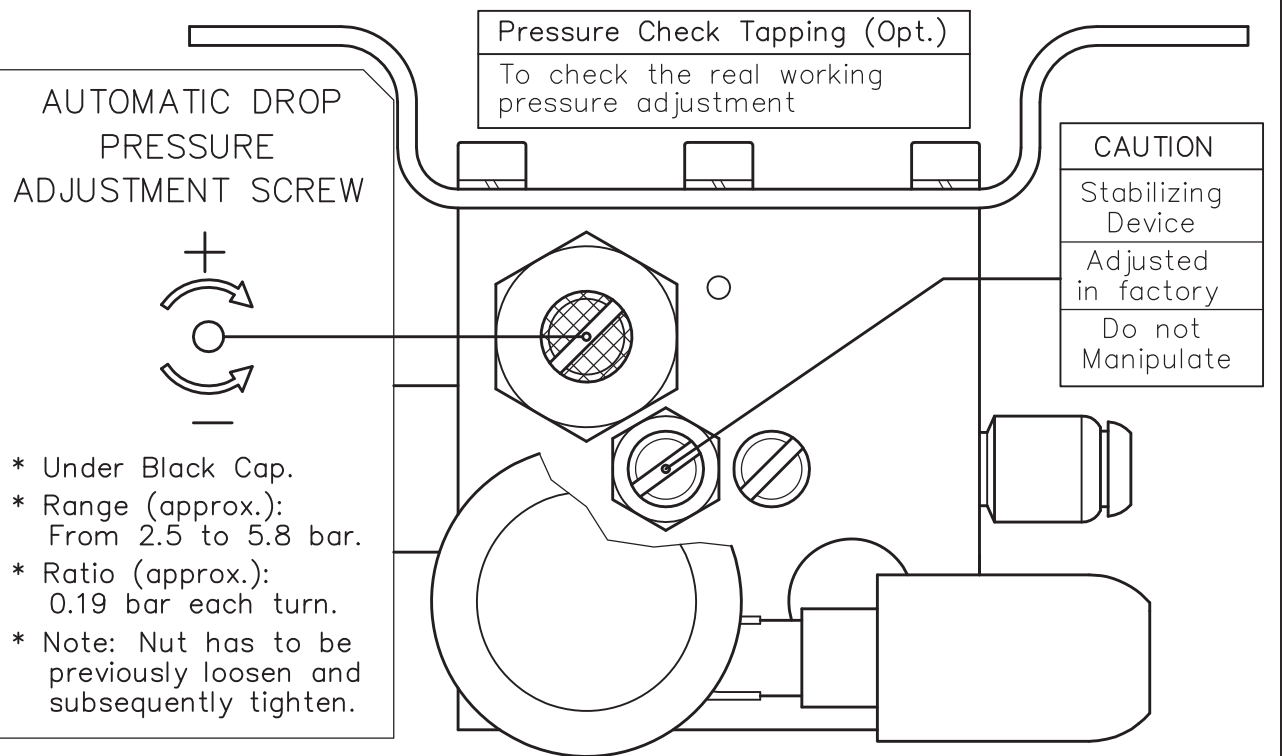
## SPECIFICATIONS

- \* Semi-automatic lift axle control valve for double suspension circuit.
- \* Manual Drop and Lifting.
- \* Automatic Drop.
- \* Fluid to use: Filtered air.
- \* Max. working pressure: 14 bar.
- \* Temperature range: From  $-35^{\circ}\text{C}$  to  $+80^{\circ}\text{C}$ .
- \* Automatic drop pressure range:
  - From 2.5 bar to 5.8 bar.
- \* Standard fittings:
  - Push-in fittings for 8 mm tube.
- \* Pneumatic Scheme and Piping: See separate document.
- \* Options:
  - Straight fittings for 10 mm tube.
  - Straight fittings for  $3/8''$  tube.
  - Automotive straight fittings for 8 mm tube.
  - Steerable elbow fittings for 8 mm tube.
  - Pressure check tapping.



## ACCEVAL MCE-1 ADJUSTMENT SCREWS

### AUTOMATIC DROP PRESSURE



## ACCEVAL MCE-1 PRACTICAL SETTING VALUES

Automatic drop pressure of MCE-1 valve has to be adjusted according to specific characteristics of the used suspension.

Customers can order MCE-1 valves with the exactly settings, according to load/pressure graph of the used suspension, or they can use a reduced group of practical settings to cover all the different cases, in a functional and safe way (Note: Each case has to be previously calculated and validated).

For MCE-1 valves and vehicles with only one lift axle, we can get it with two different setting values, corresponding to the following two order codes:

### A. MCE1-3200

VEHICLE WITH 360 MM SUSPENSION BELLOWS

\* Automatic Drop Pressure: 3.2 Bar

### B. MCE1-4500

VEHICLE WITH 300 MM SUSPENSION BELLOWS

\* Automatic Drop Pressure: 4.5 Bar