

Acceval

Other Valves

VSM-1 / RPE-2

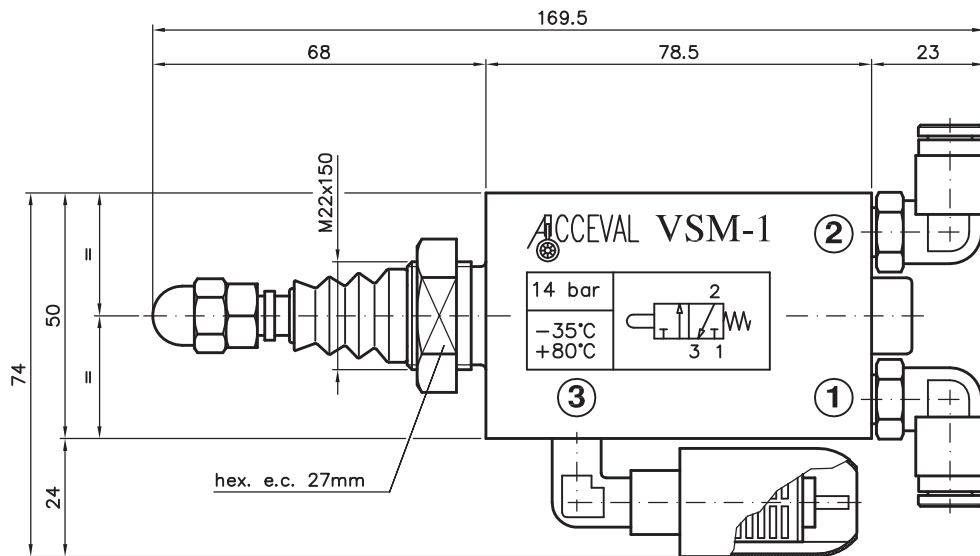
VFP-2

ACCEVAL VSM-1

3/2 MECHANICAL OPERATED VALVE (NORMALLY CLOSED)

APPLICATIONS

- * End Stroke Control for Hydraulic Cylinders in Tippers.
- * Lift Sensor of Tipcart for Quick Exhaust of Suspension Air.

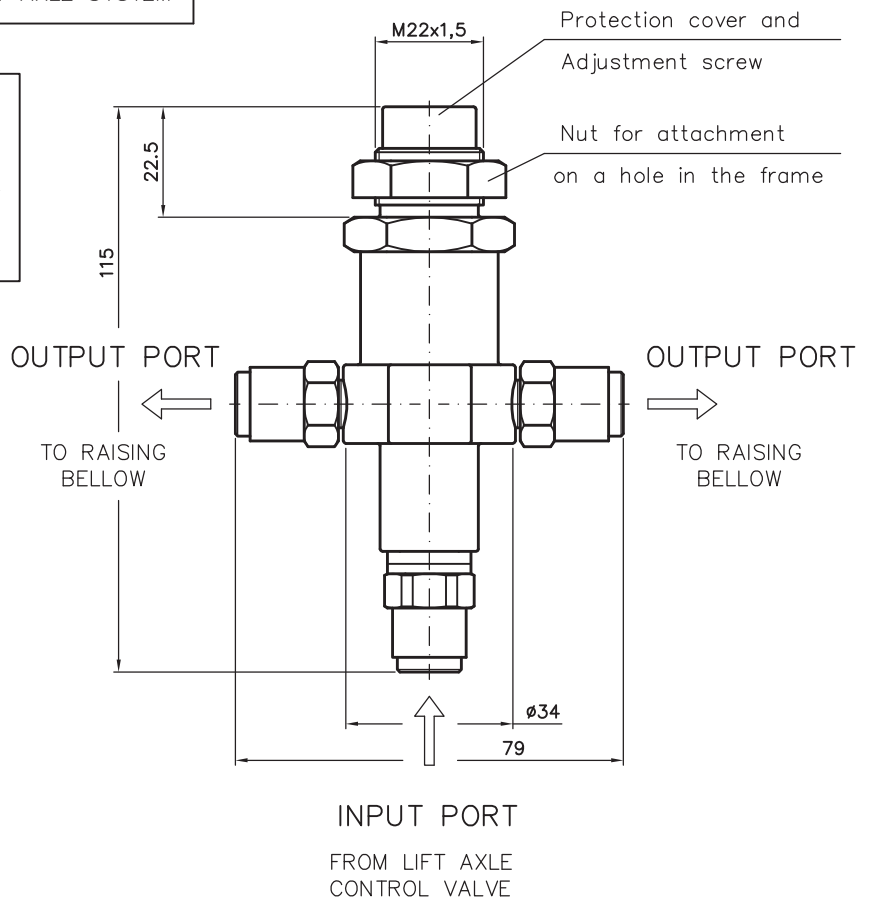


ACCEVAL RPE-2

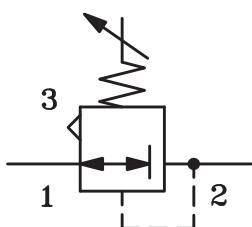
PRESSURE LIMITING VALVE FOR LIFT AXLE SYSTEM

WORKING SPECIFICATIONS

- * Pneumatical scheme: see drawing.
- * Max. working pressure: 10 bar.
- * Pressure adjustment: from 4 to 7 bar.
- * Equipped with Norgren automotive fittings for 8 mm tube.
(Standard: 2 x Output ports)



PNEUMATIC SCHEME



ACCEVAL VFP-2

SELECTOR VALVE FOR PARKING BRAKE CIRCUIT
(TWO INPUT + FOUR OUTPUT PORTS)

WORKING SPECIFICATIONS

- * Pneumtical scheme: see drawing.
- * Max. working pressure: 16 bar.
- * Temp. range: from -40°C to +80°C.

FITTINGS

- * Equipped with Raufoss automotive fittings (8/6 mm tube):
 - + 2 x M22x1,5-8mm
 - + 4 x M12x1,5-8mm
 - (Option: 10mm tube)

PNEUMATIC SCHEME

